

“Classic, elegant, and extremely legible, the font Sabon is one of the most beautiful Garamond variations.”

-Font of the Week

OLD-STYLE SERIF

Sabon is an old-style serif typeface designed by the German-born typographer and designer Jan Tschichold in the period 1964-1967. It was released jointly by the Linotype, Monotype, and Stempel type factories in 1967. The design of the roman is based on types by Claude Garamond.

abcdefghijklmnopqrstuvwxyz
ABCDEFGHIJKLMNOPQRSTUVWXYZ
f o w
e s i z a

SABON

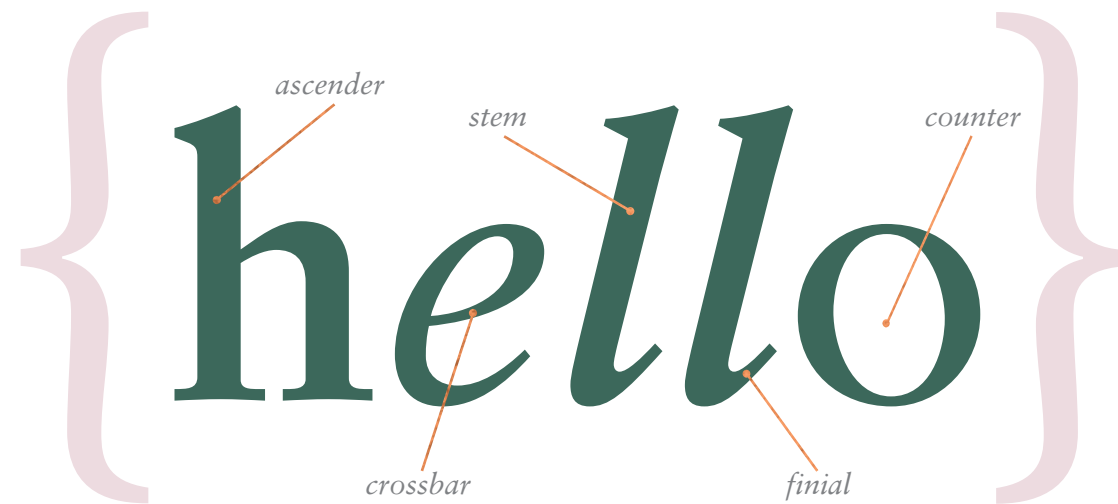
est. 1967

*“The essence of the New Typography is clarity.
This puts it into deliberate opposition to the old
typography whose aim was ‘beauty.’”*

-Jan Tschichold

CREATED FOR LETTERPRESS

Sabon was developed in the early 1960’s for a group of German printers who were complaining about the lack of a “harmonized” or uniform font that would look the same whether set by hand or on a Monotype or Linotype machine.



A
B
C

They were quite specific about the sort of font that might fit the bill, rejecting the modern and fashionable in favor of solid 16th century tradition - something modeled on Garamond and Granjon. The requirement that all weights have the same width was influenced by the ‘duplex’ system of lead casting Linotype: each Linotype-matrix can cast two different characters: roman or italic, roman or bold, which must have the same width. It also meant that the typeface then only required one set of copy-fitting data (rather than three) when compositors had to estimate the length of a text prior to actual typesetting (a common practice before computer-assisted typesetting).